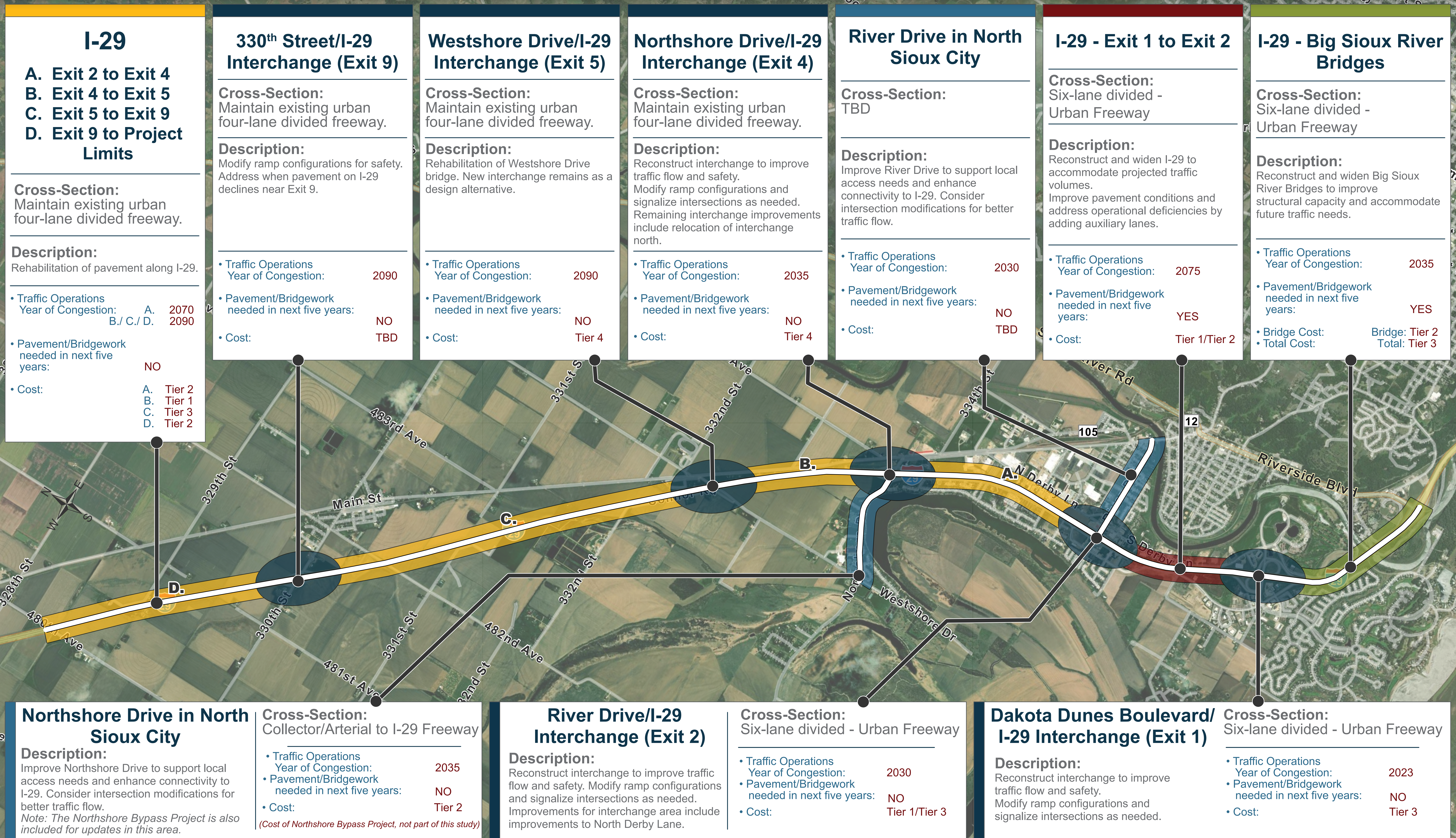


# Interstate 29 (I-29) Project Programming

## ESTIMATED PROJECT COST (MILLIONS)

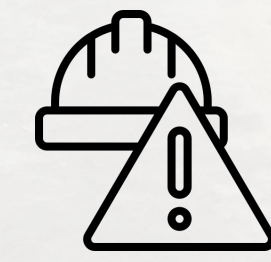
- Tier 1 Investment: <\$20M
- Tier 2 Investment: \$20M - \$40M
- Tier 3 Investment: \$40M - \$60M
- Tier 4 Investment: >\$60M

Ranges shown represent planning-level estimates



Projects shown represent anticipated future needs and potential improvements beyond the current Statewide Transportation Improvement Program (STIP) programming horizon

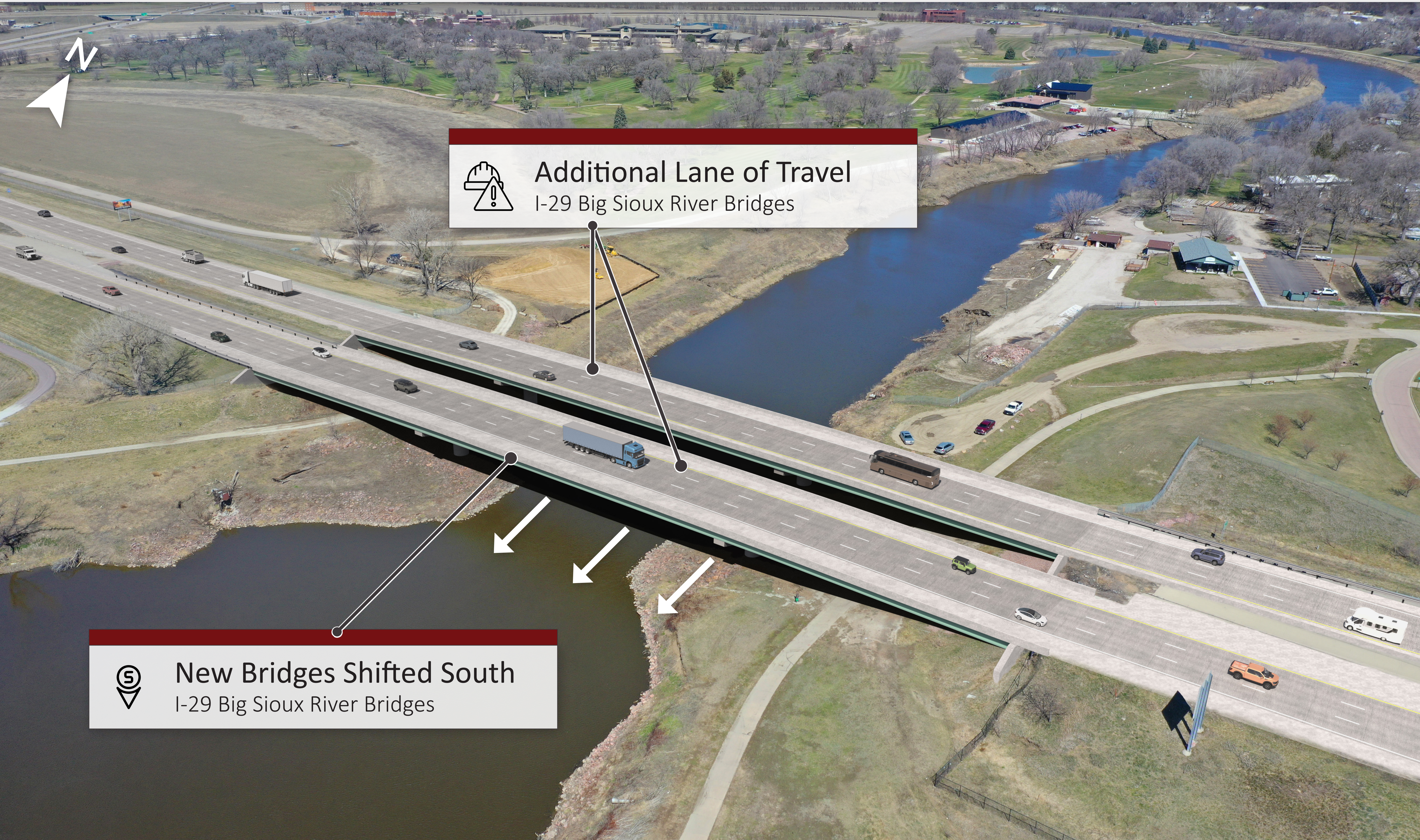
# Big Sioux River Bridges



**Additional Lane of Travel**  
I-29 Big Sioux River Bridges



**New Bridges Shifted South**  
I-29 Big Sioux River Bridges



# Exit 4 Northshore Drive

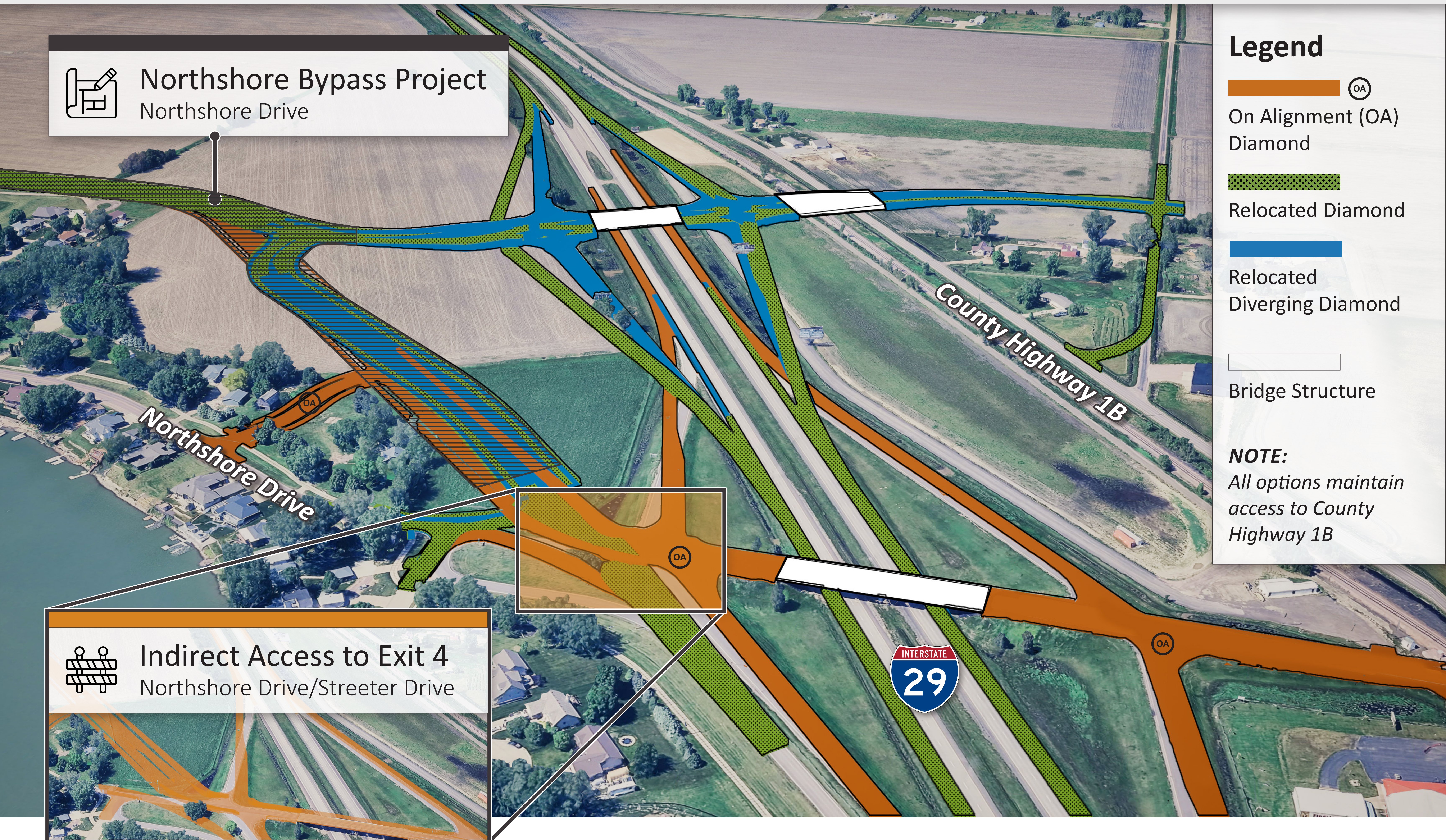
 **Northshore Bypass Project**  
Northshore Drive

 **Indirect Access to Exit 4**  
Northshore Drive/Streeter Drive

## Legend

-  On Alignment (OA) Diamond
-  Relocated Diamond
-  Relocated Diverging Diamond
-  Bridge Structure






**NOTE:**  
All options maintain access to County Highway 1B



# Exit 5 Westshore Drive



## Legend

-  Shifted Diamond Interchange
-  Shifted Partial Cloverleaf
-  Overlap Between Options
-  Bridge Structure
-  Road/Access Closure for Interchange Options

External roadway connections are conceptual and subject to future study and refinement.

*New interchange options for a potential Exit 5 displayed; removal and replacement of the current overpass remains an option.*



**Scan this QR code to visit  
the project website and view  
the presentation online.**

**<https://i29corridorsd.com/>**