

Welcome

PUBLIC MEETING OPEN HOUSE

Welcome to the Interstate 29 Corridor Study Public Meeting Open House! Please sign-in before you learn more about the Study. If you have any questions, find a Study Advisory team member.

Meeting Objectives

- Introduce the corridor study, proposed process, and expectations for future public involvement
- Gather local input on a future vision for I-29 mainline infrastructure
- Verify and gather Interstate, interchange, and cross street corridor need

Study Area and Background



- Over 11 miles of Interstate 29 is due for major rehabilitation or reconstruction in the 2030 to 2035 timeframe
- Past studies have identified the need for potential interchange improvements at Exit 1 Dakota Dunes Boulevard, Exit 2 River Drive, and Exit 4 Northshore Drive
- An implementation schedule is needed for I-29 construction projects throughout the corridor

Draft Corridor Vision

A tight-knit and engaged community plans to move safely among the natural beauty of their surroundings.



A corridor vision statement has been developed using public feedback, as well as guidance from Study advisory partners.

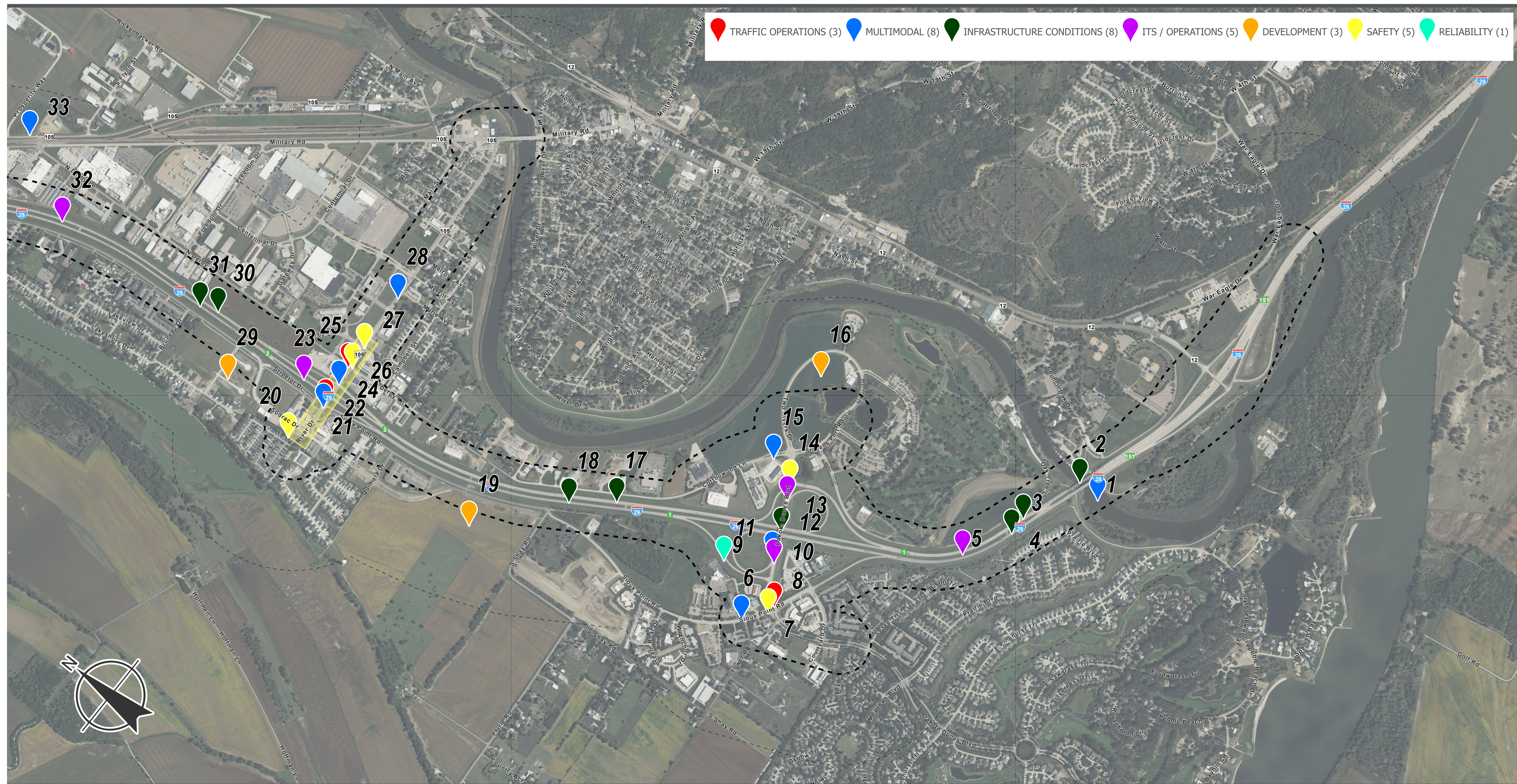
This vision statement is open to feedback at today's meeting.



Draft Corridor Vision

Does the DRAFT Corridor Vision statement resonate with you?
Tell us why or why not!

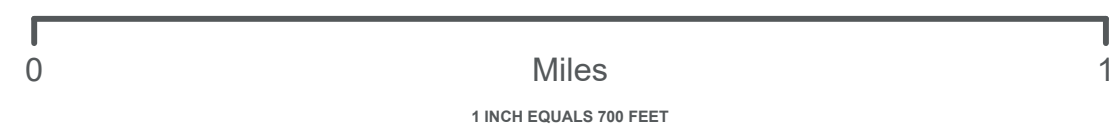
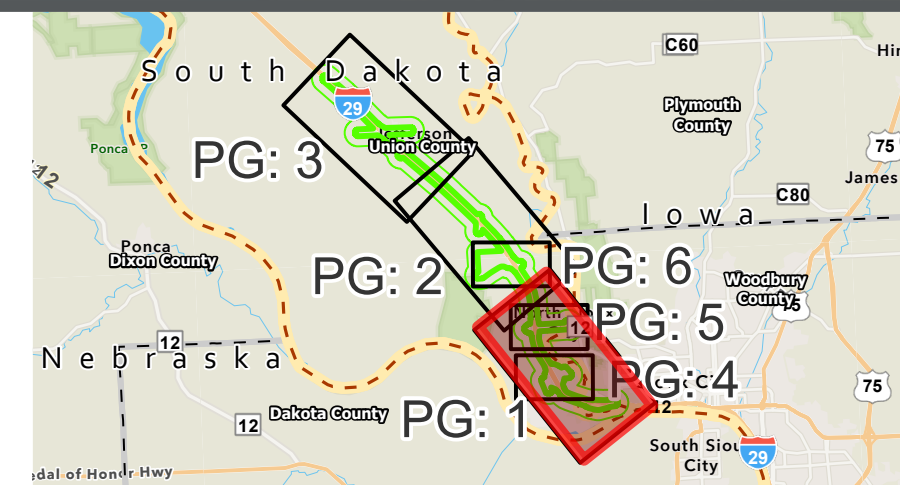
Dakota Dunes Sub-Study



ID NUMBER	DEFICIENCY / NEED
1	MISSING PEDESTRIAN / BIKE BRIDGE
2	DECK OVERLAY
3	PAVEMENT REHABILITATION
4	PAVEMENT REHABILITATION
5	CAMERA COVERAGE GAP
6	NO BIKE / PEDESTRIAN PATH
7	INTERSECTION CRASH CLUSTER
8	POOR INTERSECTION OPERATIONS DURING PM PEAK HOUR
9	HEAVY AFTERNOON PEAK FOR SB RAMP TERMINAL
10	MISSING INTERSTATE CLOSURE GATE
11	MISSING SIDEWALK CONNECTIONS

ID NUMBER	DEFICIENCY / NEED
12	DECK OVERLAY
13	MISSING INTERSTATE CLOSURE GATE
14	CRASH CLUSTER
15	NO BIKE / PEDESTRIAN PATH
16	PROPOSED MIXED USE / COMMERCIAL DEVELOPMENT
17	PAVEMENT REHABILITATION
18	PAVEMENT REHABILITATION
19	PROPOSED MIXED USE / COMMERCIAL DEVELOPMENT
20	CRASHES RELATED TO CLOSELY SPACED INTERSECTIONS
21	CROSSWALKS NEEDED
22	POOR INTERSECTION OPERATIONS DURING AM AND PM PEAK HOURS

ID NUMBER	DEFICIENCY / NEED
23	MISSING INTERSTATE CLOSURE GATE
24	CROSSWALKS NEEDED
25	POOR INTERSECTION OPERATIONS DURING AM PEAK HOUR
26	INTERSECTION CRASH CLUSTER
27	INTERSECTION CRASH CLUSTER
28	HIGH BIKE STRESS FOR SHARED USE
29	SINGLE FAMILY
30	PAVEMENT REHABILITATION
31	PAVEMENT REHABILITATION
32	CAMERA COVERAGE GAP
33	NO BIKE / PEDESTRIAN PATH

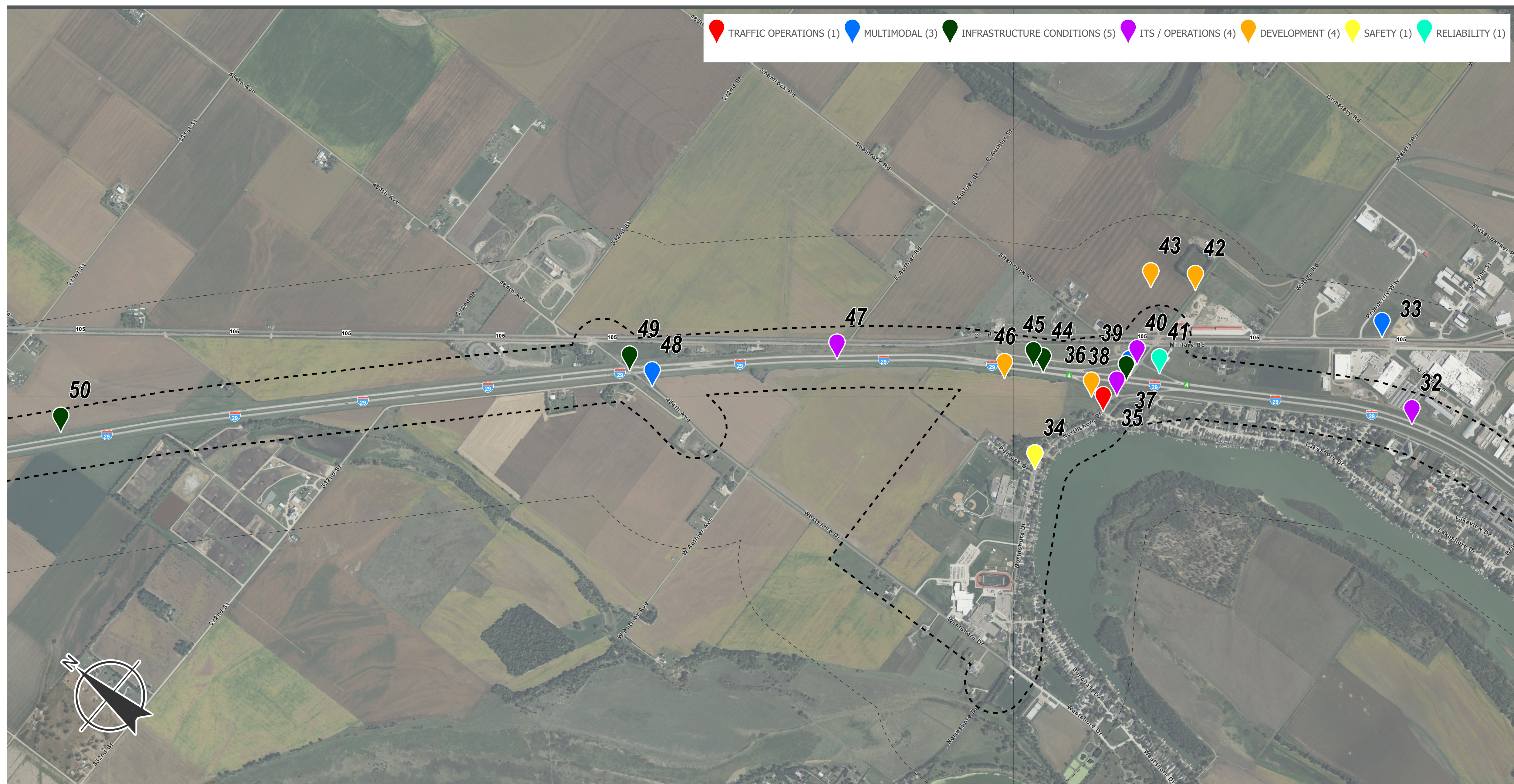


--- STUDY AREA OF INFLUENCE
--- STUDY SEGMENTS AND INTERSECTIONS

CORRIDOR NEEDS
NORTH SIOUX CITY

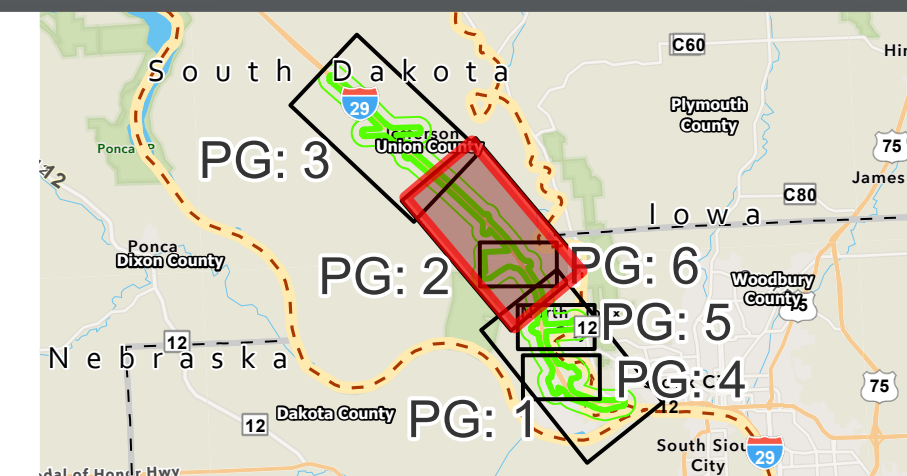
PAGE 1 OF 6

Dakota Dunes Sub-Study



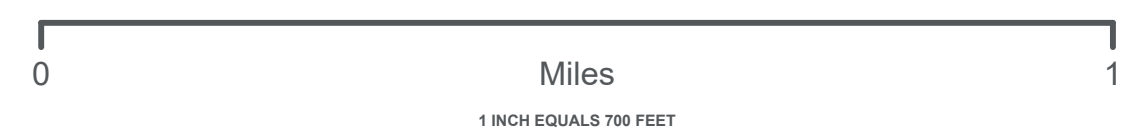
ID NUMBER	DEFICIENCY / NEED
32	CAMERA COVERAGE GAP
33	NO BIKE / PEDESTRIAN PATH
34	HEAVY TRAFFIC THROUGH RESIDENTIAL AREA
35	POOR INTERSECTION OPERATIONS DURING AM AND PM PEAK HOURS
36	PLANNED BUSINESS DISTRICT
37	MISSING INTERSTATE CLOSURE GATE
38	DECK OVERLAY
39	NO BIKE / PEDESTRIAN PATH
40	MISSING INTERSTATE CLOSURE GATE
41	HEAVY MORNING PEAK FOR NB RAMP TERMINAL

ID NUMBER	DEFICIENCY / NEED
42	NEW DEVELOPMENT ACCESS ROAD
43	FUTURE CITY DEVELOPMENT
44	PAVEMENT REHABILITATION
45	PAVEMENT REHABILITATION
46	PLANNED MULTI-FAMILY HOUSING
47	CAMERA COVERAGE GAP
48	NO BIKE / PEDESTRIAN PATH
49	DECK OVERLAY
50	PAVEMENT REHABILITATION



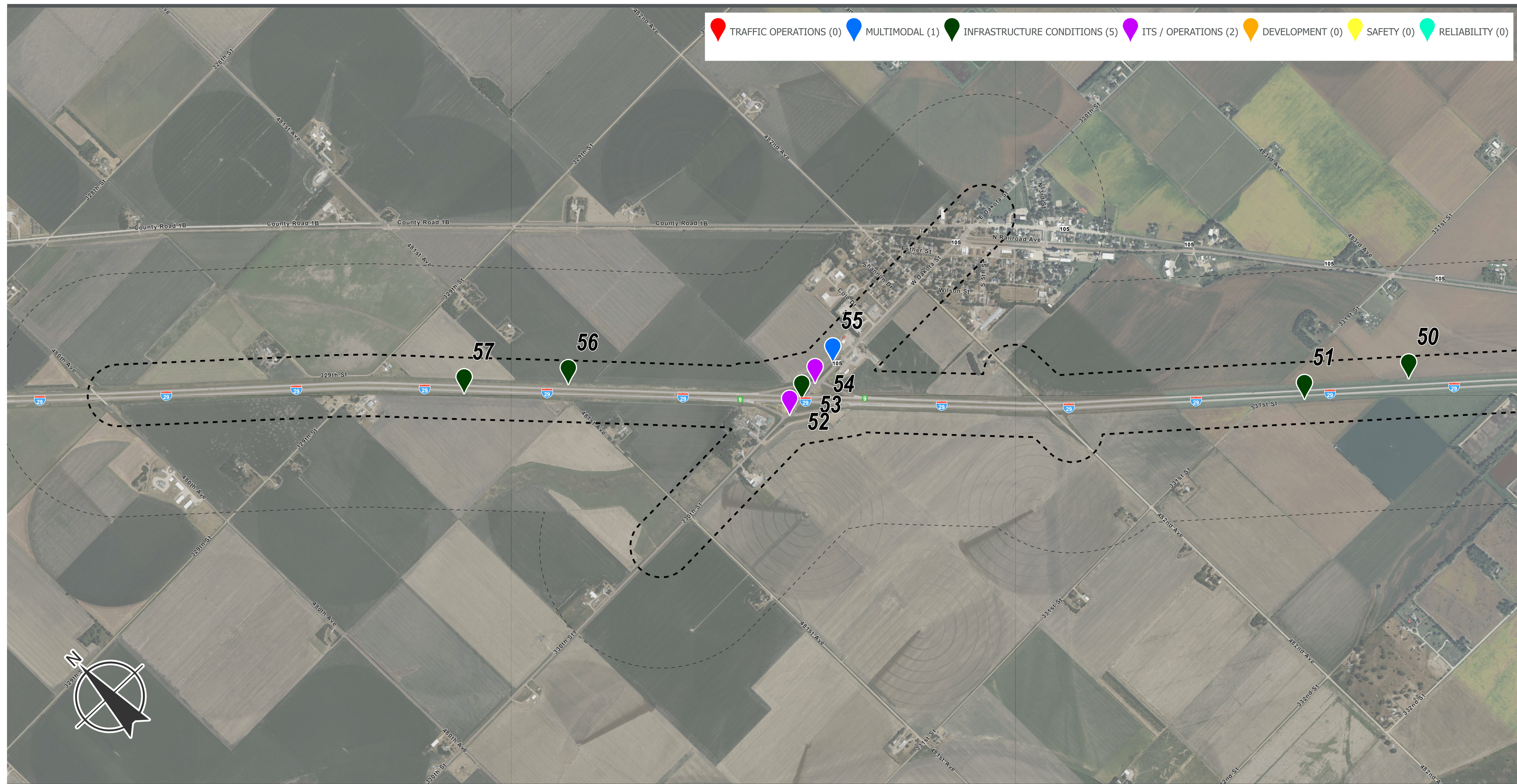
CORRIDOR NEEDS
NORTH SIOUX CITY

PAGE 2 OF 6

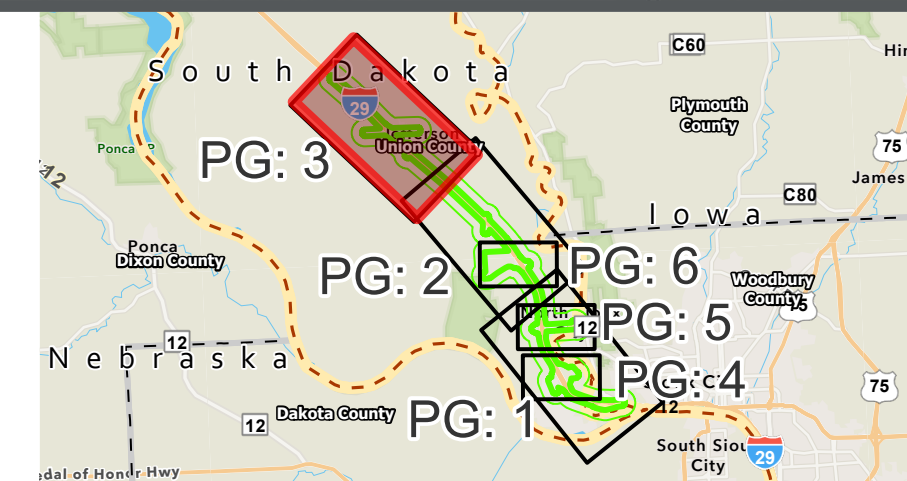


--- STUDY AREA OF INFLUENCE
--- STUDY SEGMENTS AND INTERSECTIONS

Dakota Dunes Sub-Study



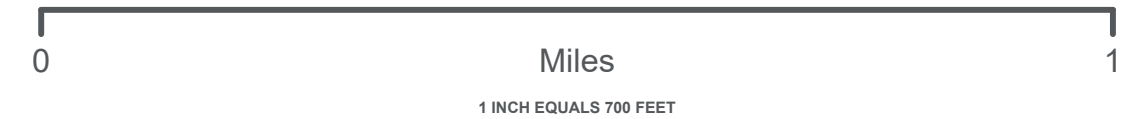
ID NUMBER	DEFICIENCY / NEED
50	PAVEMENT REHABILITATION
51	PAVEMENT REHABILITATION
52	MISSING INTERSTATE CLOSURE GATE
53	DECK OVERLAY
54	MISSING INTERSTATE CLOSURE GATE
55	NO BIKE / PEDESTRIAN PATH
56	PAVEMENT REHABILITATION
57	PAVEMENT REHABILITATION



CORRIDOR NEEDS

NORTH SIOUX CITY

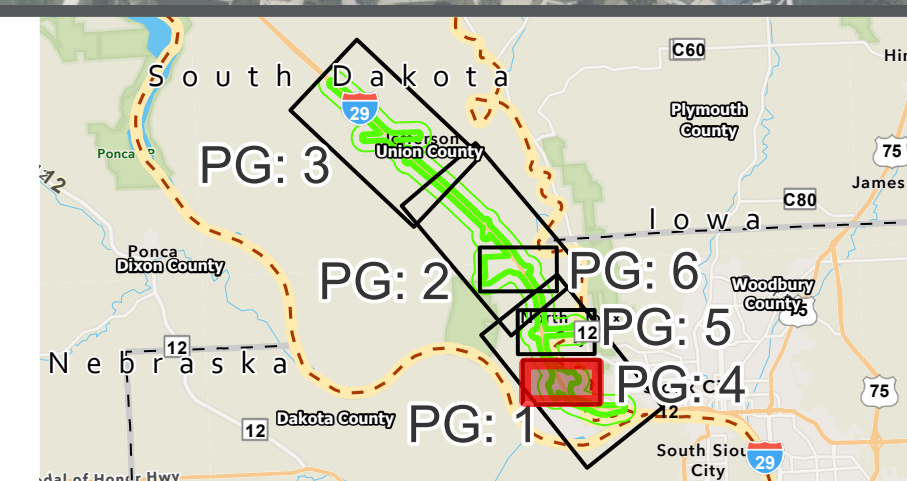
PAGE 3 OF 6



--- STUDY AREA OF INFLUENCE
--- STUDY SEGMENTS AND INTERSECTIONS

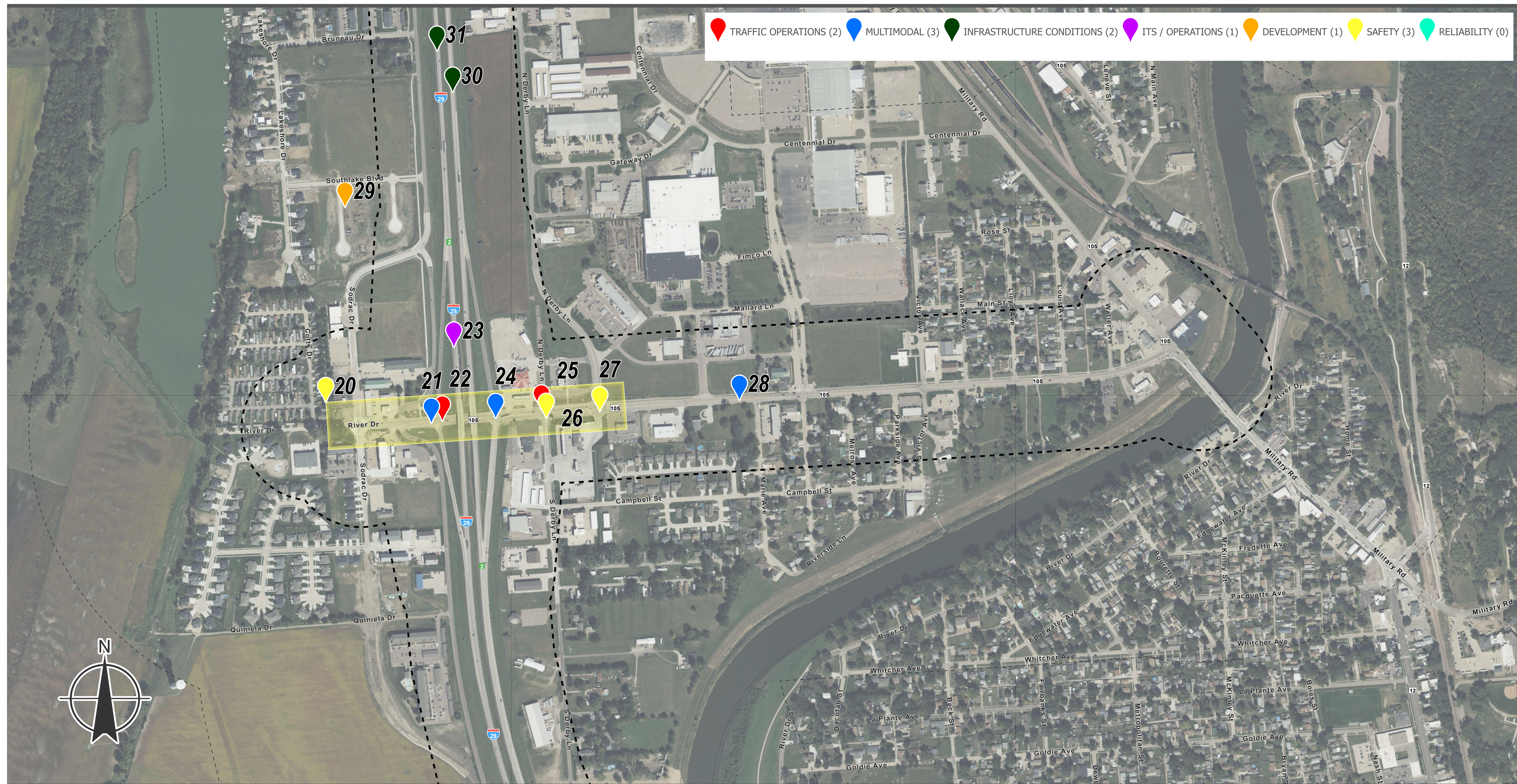
[illegible]

ID NUMBER	DEFICIENCY / NEED
12	DECK OVERLAY
13	MISSING INTERSTATE CLOSURE GATE
14	CRASH CLUSTER
15	NO BIKE / PEDESTRIAN PATH
16	PROPOSED MIXED USE / COMMERCIAL DEVELOPMENT
17	PAVEMENT REHABILITATION



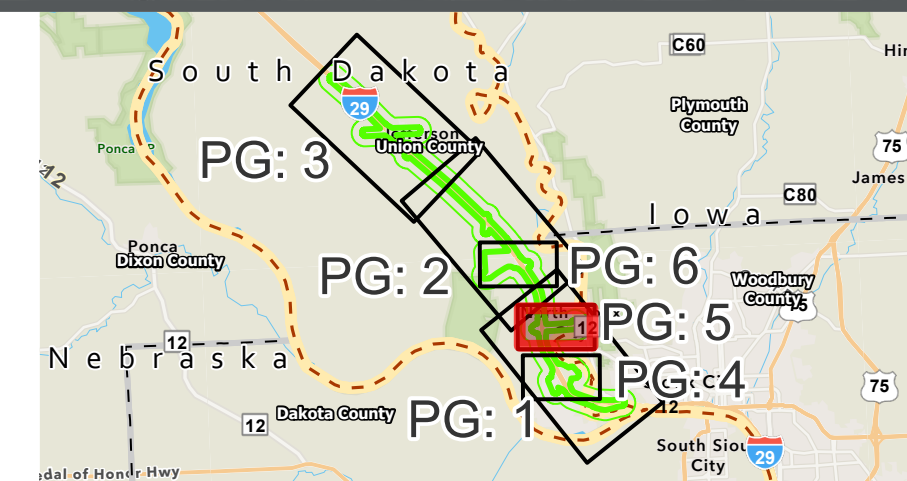
SDDOT I-29 CORRIDOR STUDY

River Drive Sub-Study



ID NUMBER	DEFICIENCY / NEED
20	CRASHES RELATED TO CLOSELY SPACED INTERSECTIONS
21	CROSSWALKS NEEDED
22	POOR INTERSECTION OPERATIONS DURING AM AND PM PEAK HOURS
23	MISSING INTERSTATE CLOSURE GATE
24	CROSSWALKS NEEDED
25	POOR INTERSECTION OPERATIONS DURING AM PEAK HOUR

ID NUMBER	DEFICIENCY / NEED
26	INTERSECTION CRASH CLUSTER
27	INTERSECTION CRASH CLUSTER
28	HIGH BIKE STRESS FOR SHARED USE
29	SINGLE FAMILY
30	PAVEMENT REHABILITATION
31	PAVEMENT REHABILITATION

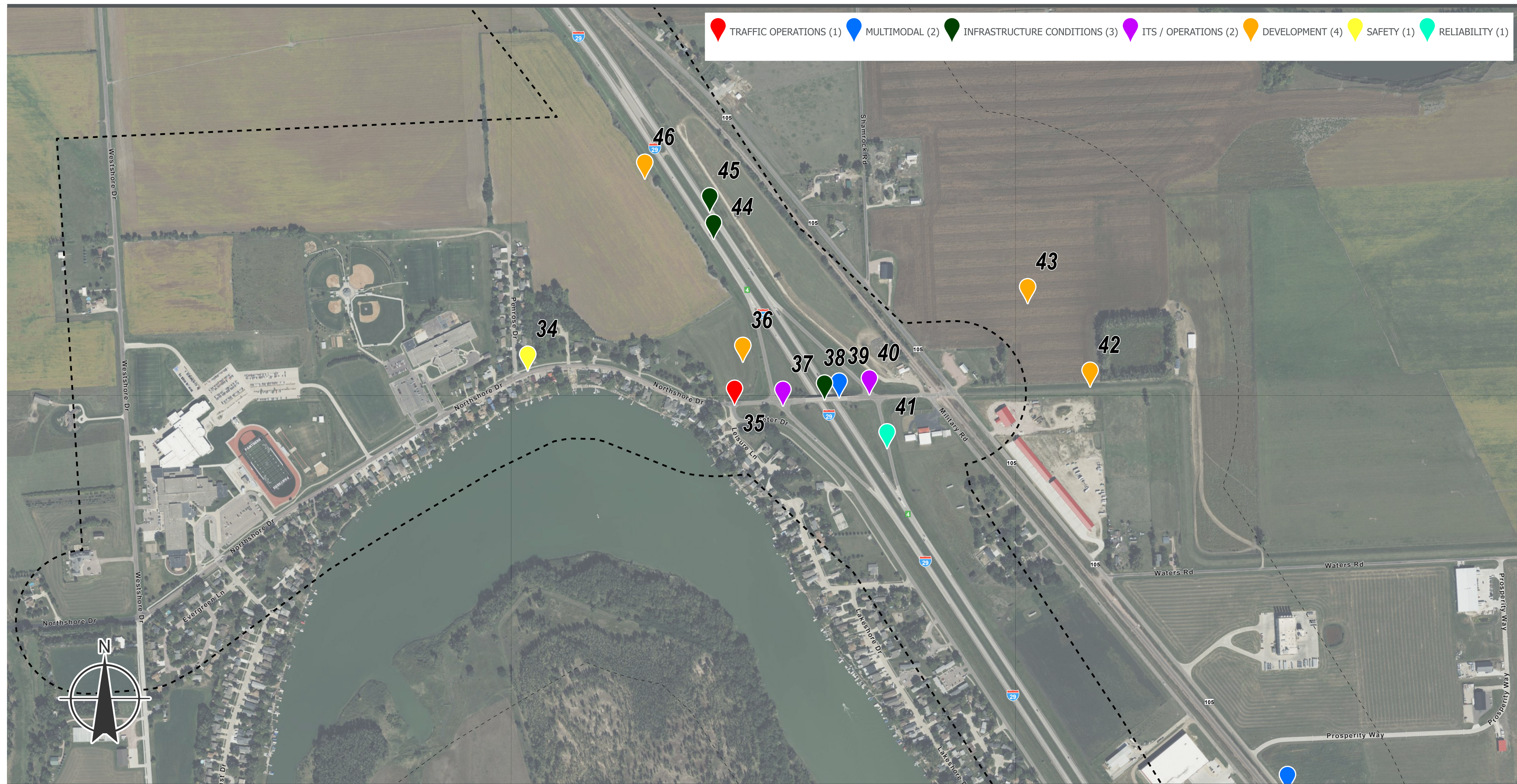


0 Miles 0.5
1 INCH EQUALS 300 FEET

STUDY AREA OF INFLUENCE
STUDY SEGMENTS AND INTERSECTIONS

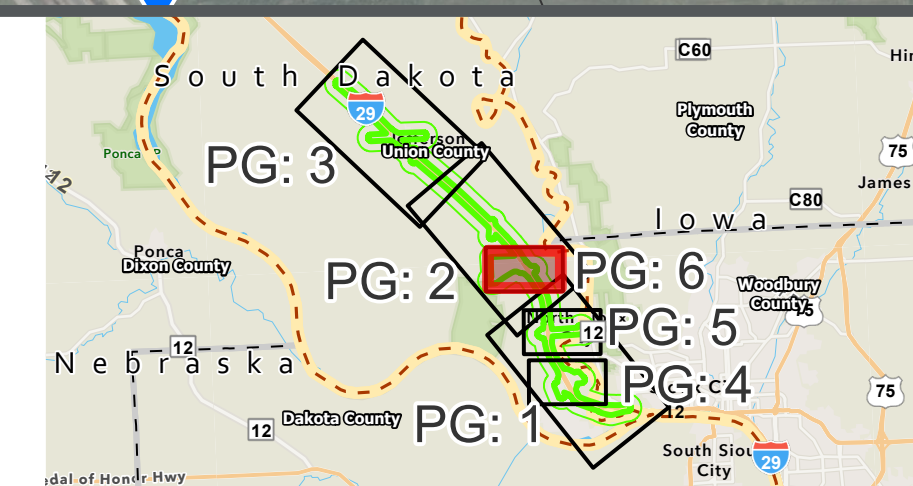
CORRIDOR NEEDS
NORTH SIOUX CITY
PAGE 5 OF 6

Northshore Sub-Study



ID NUMBER	DEFICIENCY / NEED
33	NO BIKE / PEDESTRIAN PATH
34	HEAVY TRAFFIC THROUGH RESIDENTIAL AREA
35	POOR INTERSECTION OPERATIONS DURING AM AND PM PEAK HOURS
36	PLANNED BUSINESS DISTRICT
37	MISSING INTERSTATE CLOSURE GATE
38	DECK OVERLAY
39	NO BIKE / PEDESTRIAN PATH

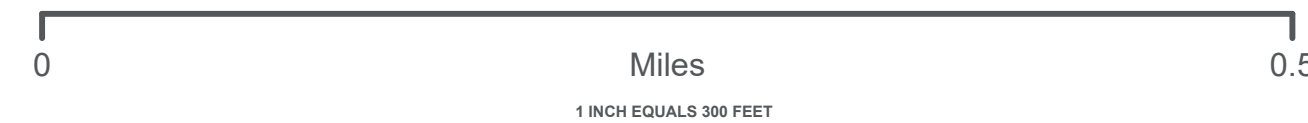
ID NUMBER	DEFICIENCY / NEED
40	MISSING INTERSTATE CLOSURE GATE
41	HEAVY MORNING PEAK FOR NB RAMP TERMINAL
42	NEW DEVELOPMENT ACCESS ROAD
43	FUTURE CITY DEVELOPMENT
44	PAVEMENT REHABILITATION
45	PAVEMENT REHABILITATION
46	PLANNED MULTI-FAMILY HOUSING



CORRIDOR NEEDS

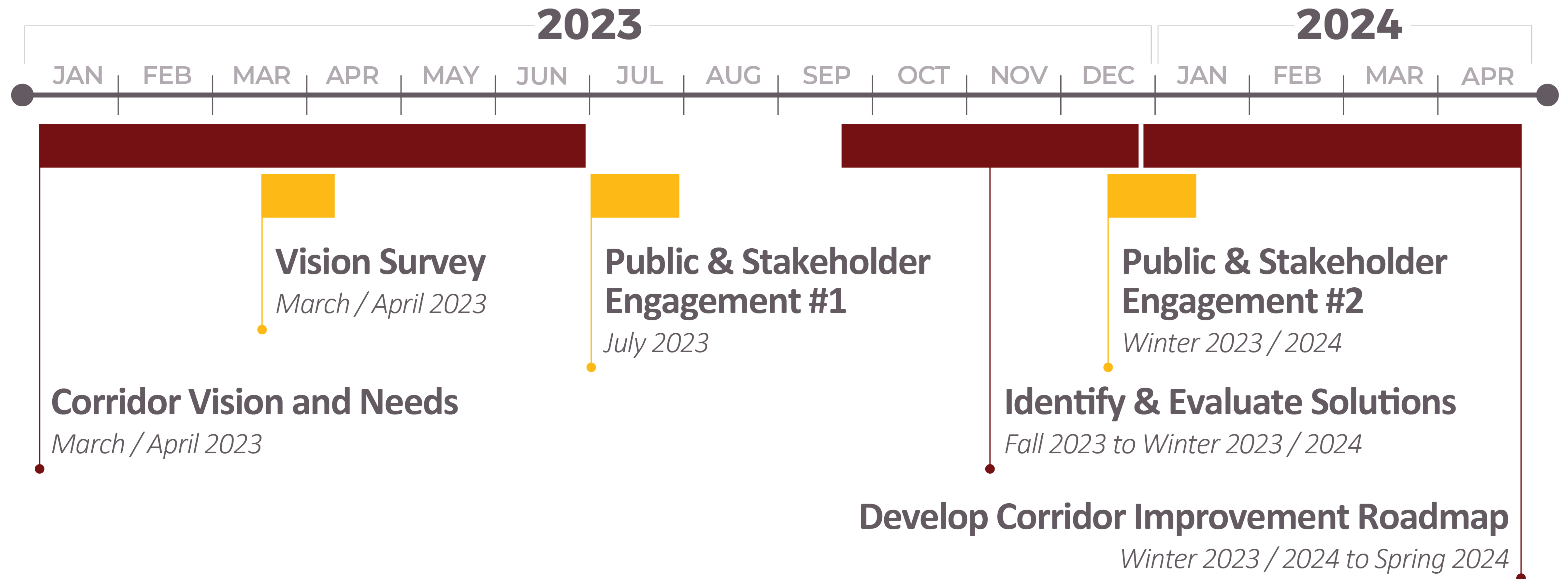
NORTH SIOUX CITY

PAGE 6 OF 6



--- STUDY AREA OF INFLUENCE
--- STUDY SEGMENTS AND INTERSECTIONS

Project Schedule



Study Next Steps

The Study team's next steps will be to:

 Incorporate public and stakeholder feedback on corridor vision and needs

 Document corridor needs

 Develop potential Interstate, interchange, and cross street concepts

 Hold winter 2023-2024 public and stakeholder meetings



Stay involved by visiting **i29corridorSD.com**